

# 51786

Unipolar Interlock Door Switch 4,75 (K)

## Technical Document

### Features

Quick and secure mounting

Compatible with various sheet thicknesses.

3 position switch.

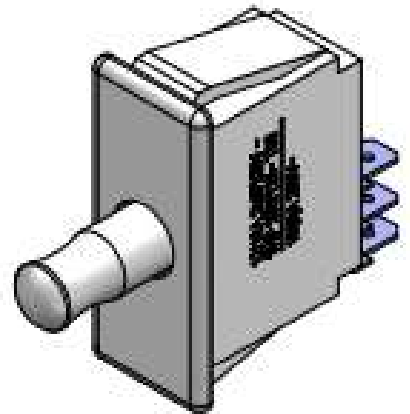
### Applications

Machines that need to ensure the lock of the doors.

The **Unipolar Interlock Door Switch 4,75(K)** is designed for quick and secure mounting by means of two tabs to maintain its position. It is compatible with various sheet thicknesses.

The Unipolar Switch is mainly used to ensure the closing of the doors in the machines.

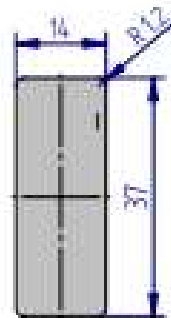
3 positions; at rest, pressed and fixed.  
(See example of application)



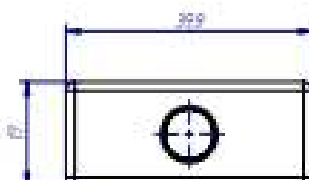
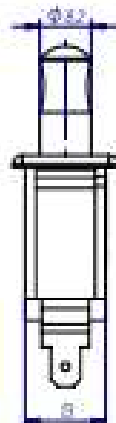
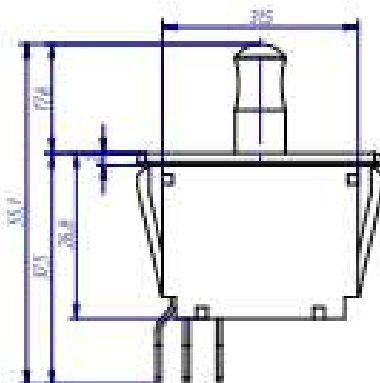
### Specifications

Rating: DC 30V 10A  
Contact R.(Max.): DC 5V 1A 30m  
Insulation R. (Min.) DC 500V 100M  
Withstand VOL.: AC 500V 1minute  
Life cycle (Max): 10000 cycles

### PANEL CUT OUT



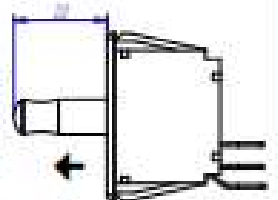
### Dimensions



### POSITIONS

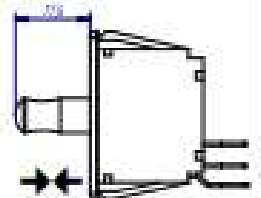
#### • Fixed.

In this position the maintenance operator can have the door open while the machine is still running.



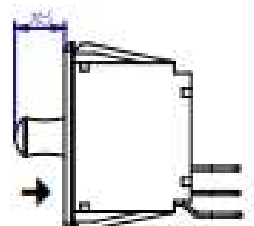
#### • At rest.

Position where the door is open and the machine is stopped.



#### • Pressed

The door is closed and the machine is working.



*\*This is an example depending on the configuration out of every machine*

The Door is closed and working.